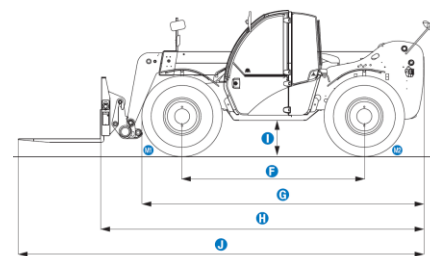
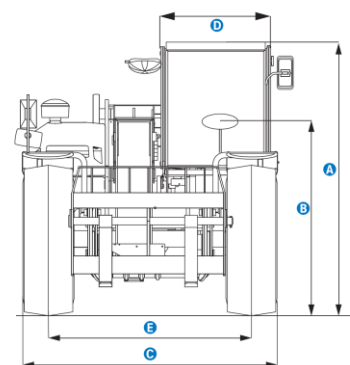


Specifications

| | | GTH – 3007 |
|-----------|-----------------------------|------------|
| | Lifting height maximum | 6.89 m |
| | Forward reach maximum | 3.99 m |
| | Reach at maximum height | 76 cm |
| A | Height | 2.07 m |
| B | Height at steering wheel | 1.35 m |
| C | Width | 1.99 m |
| D | Cab width | 86 cm |
| E | Track | 1.59 m |
| F | Wheelbase | 2.66 m |
| G | Length at front wheels | 4.06 m |
| H | Length at fork-holder plate | 4.71 m |
| I | Ground clearance | 50 cm |
| J | Overall length | 5.91 m |
| M1 | Obstruction angle | 90° |
| M2 | Departure angle | 45° |



| Productivity | | |
|--------------|--|-------------------|
| | Lifting capacity maximum | 3 000 kg |
| | Lift capacity at maximum height | 2 500 kg |
| | Lift capacity at maximum reach | 1 250 kg |
| | Break-out force* | 4 270 kg |
| | Towing capacity at dynamometer* | 3 900 kg |
| | Drive speed max. | 32 km/h |
| | Fork-holder plate rotation | 128° |
| | Lifting/lowering speed (With Fork) | 9 sec / 7 sec |
| | Extension/retraction speed (With Fork) | 8 sec./5 sec. |
| | Tyres (DIN 70361) | 405/70-20" PR14 8 |



| Power | | |
|---|--|--|
| Power source | Deutz TD2011 L04W 4-cylinder turbo diesel 91 hp (68 kW), stage III | |
| Transmission | Hydrostatic variable displacement pump linked to variable displacement motor. Mechanical 2-speed gearbox | |
| Service pumps (Boom & Control system gear pump) | 87L/min / 280bar | |
| Fuel tank capacity | 90 L | |
| Hydraulic tank capacity | 80 L | |

| Sound & Vibration Levels | | |
|--------------------------|---|-----------------------|
| | Mean assessed vibration level transmitted to arms | 2,50 m/s ² |
| | Mean assessed vibration level transmitted to body | 0,44 m/s ² |
| | Sound pressure level at the operator position | 82 dB |
| | Guaranteed sound power level | 102 dB |

| Weight * | | |
|----------|--|----------|
| | | 5 900 kg |

| Standards Compliance | |
|---|--|
| EU Dyrektywa: EU Machinery Directive 2006/42/EC, ISO3471 (ROPS) and ISO3449 (FOPS), EU Directive 97/68/EC Stage III and 2004/26/EC; EU Directive 2000/14/EC; EN13059:2002 | |

* Max Load

Specification 18.07.13

SPRZEDAŻ • WYNAJEM • SERWIS • CZĘŚCI



www.gizo.pl

Centrala:
16-070 Choroszcz k. B-stoku
trasa nr 8 Warszawa - Białystok
Złotonia 225
tel./fax: 85 719 34 40
biuro@gizo.pl

Tychy:
43-100 Tychy, ul. Beskidzka 21
trasa nr 1 Katowice - Tychy
tel.: 32 329 86 25-26
fax: 32 329 82 36
tychy@gizo.pl

Warszawa:
03-236 Warszawa
ul. Annapol 4
tel./fax: 22 609 62 25-26
warszawa@gizo.pl

Gdańsk:
80-299 Gdańsk
(obwodnica Trójmiasta)
ul. Międzygwieżna 7
tel./fax: 58 341 86 98
gdansk@gizo.pl

Poznań:
61-080 Tarnowo Podgórne
ul. Poznańska 48, Swadzim
tel./fax: 61 843 38 44
poznan@gizo.pl

Bełchatów:
97-427 Rogowiec
ul. Instalacyjna 14
tel.: 604 414 235
belchatow@gizo.pl

Szczecin:
72-001 Kolbaskowo 119
tel.: 602 795 195
szczecin@gizo.pl
Lublin:
tel. 602 374 205
lublin@gizo.pl

Wrocław:
52-014 Wrocław
ul. Opolska 140
tel.: 602 425 600
wroclaw@gizo.pl

Europa Zachodnia:
tel.: +48 602 188 588
europa@gizo.pl
Europa Wschodnia:
tel.: +375 293 211 999
sasha@gizo.pl

Features

Standard Features

Measurements

GTH - 3007

- 6.89 m – working height
- 3 000 kg lift capacity
- 3.99 m - forward reach maximum

Productivity

- 4 x 4
- 4 wheel steer
- 3 steering modes:
 - front wheel steer,
 - crab steer,
 - coordinated steer
- Hydraulic line on boom
- Power assisted steering
- Hydrostatic transmission with variable displacement pump and motor linked to 2-speed mechanical gearbox
- Electro-proportional 4x1 joystick
- Limited slip differential on front axle
- Attachment holder plate – mechanical coupling
- Two-section door (glass upper/steel lower)
- Angle and length indicators on boom correspond to load charts
- Adjustable suspended seat with operator detection seat contact switch
- Battery disconnection switch
- Large diameter steering wheel
- Front & rear windscreen wipers
- Sunshield
- Roof protection grid
- Two side view mirrors & rear fish eye mirror
- Front & rear lights
- Side mounted engine for easy access to components
- Oil immersed, multi-disc brakes on front axle
- Self activated parking brake hydraulically released
- Lockable fuel tank
- Maintenance collar
- Stability and load control system:
 - Load moment indicator with LEDs
 - Audible alarm
 - Automatic lock-out of boom extension and lowering
- Road/jobsite switch

Options & Accessories

- Air conditioning
- Hydraulic inching by service brake pedal action
- Main electrical line on boom
- Additional hydraulic line on boom
- Hydraulic quick coupling for attachments
- Biodegradable hydraulic oil
- GM-1 Articulation for Manitou attachments
- Adjustable spotlight on boom
- Adjustable spotlight on cab
- Windshield protection grid
- Wiper on cab roof
- 6 t towing hook
- Rear wheel alignment system
- 250 L concrete mixing bucket (full hydraulic)
- Agri kit (towing hook, special air filter and electric rear connection)
- 405/70-24" PR14
- Spare wheel 405/70-20" PR14
- Special air filter
- 10 t hydraulic jack + 24 mm box wrench
- Spare wheel 405/70-24" PR14
- Floating forks L 1200 mm, section 100x50 mm
- FEM 3 plate and forks kit
- 500/800 L loading shovel
- FEM 3 forks with hydraulic side-shift (+/-100 mm)
- 500 L concrete bucket (manual or hydraulic discharge)
- Brick-holder basket
- Fixed hook on plate
- 2 m mechanical extension jib, 2,000 kg capacity
- 4 m mechanical or hydraulic extension jib, 900 kg capacity

Zasilanie

- Deutz turbo diesel 91 hp (68 kW), stage III

Koła

- 405/70-20" PR14. 8 holes wheel disc (DIN 70361)

SPRZEDAŻ • WYNAJEM • SERWIS • CZĘŚCI



www.gizo.pl

Centrala:
16-070 Choroszcz k. B-stoku
trasa nr 8 Warszawa - Białystok
Złotoria 225
tel./fax: 85 719 34 40
biuro@gizo.pl

Tychy:
43-100 Tychy, ul. Beskidzka 21
trasa nr 1 Katowice-Tychy
tel.: 32 329 86 25-26
fax: 32 329 82 36
tychy@gizo.pl

Warszawa:
03-236 Warszawa
ul. Annopol 4
tel./fax: 22 609 62 25-26
warszawa@gizo.pl

Gdańsk:
80-299 Gdańsk
(obwodnica Trójmiasta)
ul. Międzygwieżna 7
tel./fax: 58 341 86 98
gdansk@gizo.pl

Poznań:
61-080 Tarnowo Podgórne
ul. Poznańska 48, Swadzim
tel./fax: 61 843 38 44
poznan@gizo.pl

Belchatów:
97-427 Rogowiec
ul. Instalacyjna 14
tel.: 604 414 235
belchatow@gizo.pl

Szczecin:
72-001 Kolbaskowo 119
tel.: 602 795 195
szczecin@gizo.pl

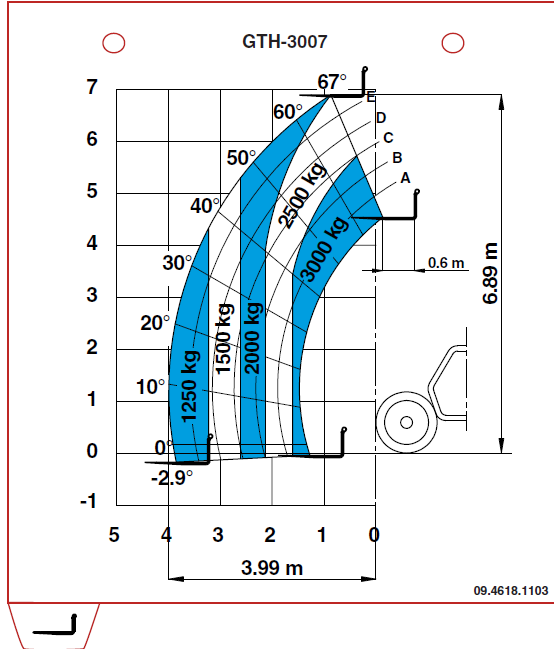
Lublin:
tel. 602 374 205
lublin@gizo.pl

Wrocław:
52-014 Wrocław
ul. Opolska 140
tel.: 602 425 600
wroclaw@gizo.pl

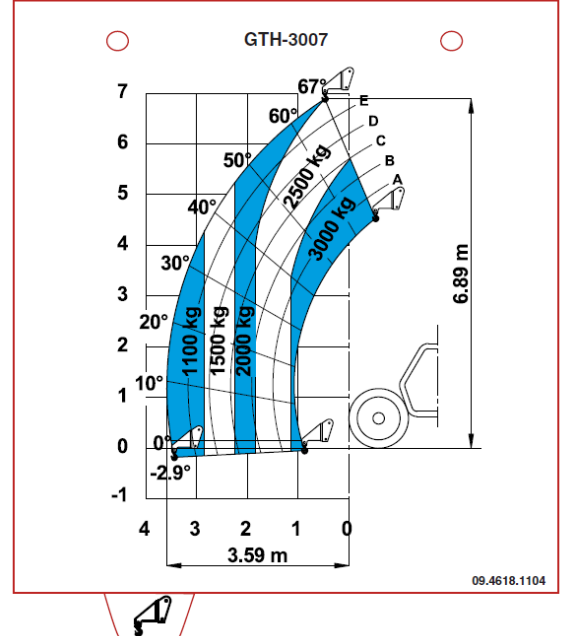
Europa Zachodnia:
tel.: +48 602 188 588
europa@gizo.pl

Europa Wschodnia:
tel.: +375 293 211 999
sasha@gizo.pl

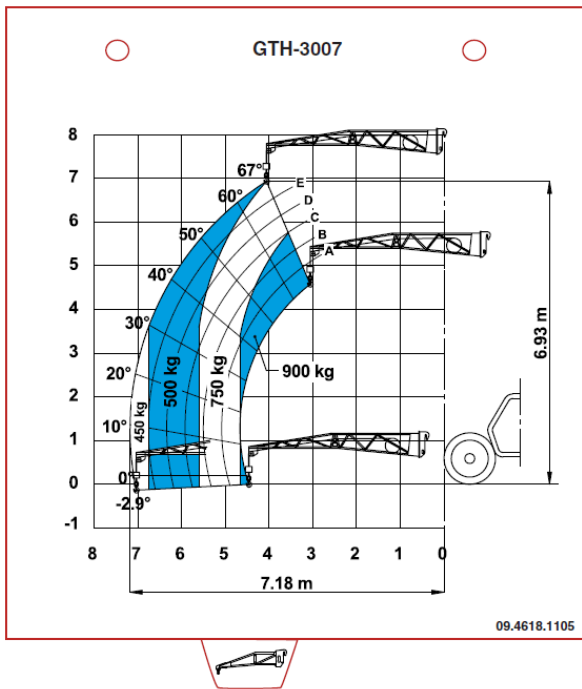
■ GTH-3007 - FLOATING FORKS



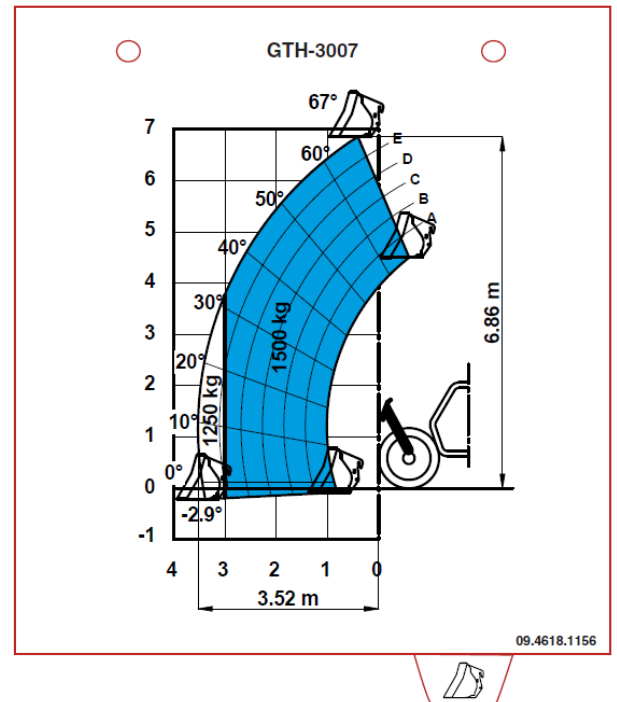
■ GTH-3007 - HOOK



■ GTH-3007 - 900KG JIB



■ GTH-3007 - BUCKET



SPRZEDAŻ • WYNAJEM • SERWIS • CZĘŚCI



www.gizo.pl

Centrala:
16-070 Choroszcz k. B-stoku
trasa nr 8 Warszawa - Białystok
Złotonia 225
tel./fax: 85 719 34 40
biuro@gizo.pl

Tychy:
43-100 Tychy, ul. Beskidzka 21
trasa nr 1 Katowice - Tychy
tel.: 32 329 86 25-26
fax: 32 329 82 36
tychy@gizo.pl

Warszawa:
03-236 Warszawa
ul. Annapol 4
tel./fax: 22 609 62 25-26
warszawa@gizo.pl

Gdańsk:
80-299 Gdańsk
(obwodnica Trójmiasta)
ul. Międzywiedzna 7
tel./fax: 58 341 86 98
gdansk@gizo.pl

Poznań:
61-080 Tarnowo Podgórne
ul. Poznańska 48, Swadzim
tel./fax: 61 843 38 44
poznan@gizo.pl

Bełchatów:
97-427 Rogowiec
ul. Instalacyjna 14
tel.: 604 414 235
belchatow@gizo.pl

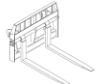
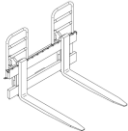

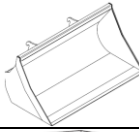
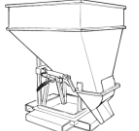
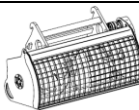

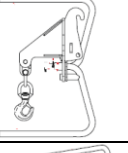
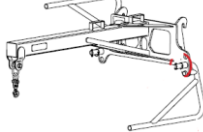
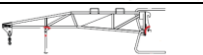
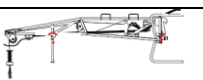
Szczecin:
72-001 Kolbaskowo 119
tel.: 602 795 195
szczecin@gizo.pl

Lublin:
tel. 602 374 205
lublin@gizo.pl

Wrocław:
52-014 Wrocław
ul. Opolska 140
tel.: 602 425 600
wroclaw@gizo.pl

Europa Zachodnia:
tel.: +48 602 188 588
europa@gizo.pl

Europa Wschodnia:
tel.: +375 293 211 999
sasha@gizo.pl

| | Part Number | Description | Payload | Width | Length | Height | Height |
|---|--------------|---|----------|----------|----------|----------------|--------|
|  | 55.0750.0041 | Floating forks | 3 000 kg | 1 285 mm | 1560 | 950 mm | 275 kg |
|  | 55.0750.0002 | Hydraulic FEM 3 forks side-shift +/- 100 mm | 3 000 kg | 1 390 mm | 1 505 mm | 1 130 mm | 380 kg |
|  | 59.0601.5002 | widły FEM 3 z przenośnikiem hydraulicznym | 3 000 kg | 1 370 mm | 1 620 mm | 1 145 mm | 520 kg |
|  | 59.0201.9002 | 500 L loading shovel | | 2 036 mm | 980 mm | 810 mm | 355 kg |
| | 59.0201.9003 | 800 L loading shovel | | 2 036 mm | 1 175 mm | 940 mm | 420 kg |
|  | 59.0400.0000 | 500 L concrete bucket manual discharge | | 1 110 mm | 1 110 mm | 1 320 mm | 230 kg |
| | 59.0400.1000 | 500 L concrete bucket hydraulic discharge | | 1 110 mm | 1 110 mm | 1 320 mm | 244 kg |
|  | 59.0401.2003 | 250 L concrete mixing bucket full hydraulic | | 1 506 mm | 795 mm | 840 mm | 460 kg |
|  | 59.0400.7000 | Brick holder basket | | 800 mm | 1 110 mm | 1 150 mm | 120 kg |
|  | 59.0700.9002 | 5T fixed hook on plate | 3 000 kg | 1 335 mm | 830 mm | 1 071/1 110 mm | 160 kg |
|  | 59.0802.3007 | 2m/1250 kg mechanical jib | 2 000 kg | 1 335 mm | 2 290 mm | 800/1 080 mm | 255 kg |
|  | 59.0802.3008 | 4m/900 Kg mechanical jib | 900 kg | 1 190 mm | 4 450 mm | 980/1 220 mm | 245 kg |
|  | 59.0802.3009 | 4m/900 kg hydraulic jib | 900 kg | 1 190 mm | 4 485 mm | 980/1 220 mm | 320 kg |

SPRZEDAŻ • WYNAJEM • SERWIS • CZĘŚCI



www.gizo.pl

Centrala:
16-070 Choroszcz k. B-stoku
trasa nr 8 Warszawa - Białystok
Złotoria 225
tel./fax: 85 719 34 40
biuro@gizo.pl

Tychy:
43-100 Tychy, ul. Beskidzka 21
trasa nr 1 Katowice - Tychy
tel.: 32 329 86 25-26
fax: 32 329 82 36
tychy@gizo.pl

Warszawa:
03-236 Warszawa
ul. Annapol 4
tel./fax: 22 609 62 25-26
warszawa@gizo.pl

Gdańsk:
80-299 Gdańsk
(obwodnica Trójmiasta)
ul. Międzygwieżna 7
tel./fax: 58 341 86 98
gdansk@gizo.pl

Poznań:
61-080 Tarnowo Podgórne
ul. Poznańska 48, Swadzim
tel./fax: 61 843 38 44
poznan@gizo.pl

Bełchatów:
97-427 Rogowiec
ul. Instalacyjna 14
tel.: 604 414 235
belchatow@gizo.pl

Szczecin:
72-001 Kolbaskowo 119
tel.: 602 795 195
szczecin@gizo.pl

Lublin:
tel. 602 374 205
lublin@gizo.pl

Wrocław:
52-014 Wrocław
ul. Opolska 140
tel.: 602 425 600
wroclaw@gizo.pl

Europa Zachodnia:
tel.: +48 602 188 588
europa@gizo.pl

Europa Wschodnia:
tel.: +375 293 211 999
sasha@gizo.pl